

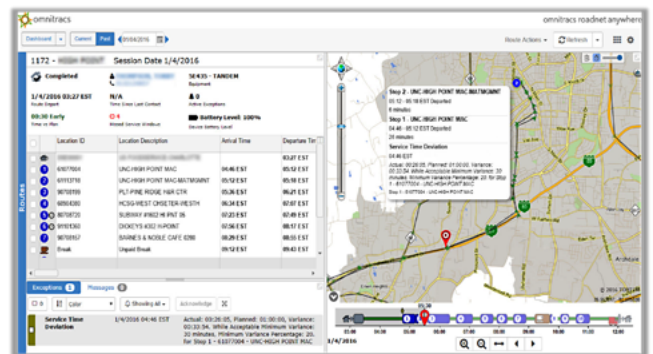
# Omnitracs

## Routing + Dispatching + Compliance (RDC)

### Cloud-Based Vehicle and Driver Routing, Dispatching, and Compliance — Streamlined

#### Omnitracs RDC Advantages:

- Web-based, software-as-a-service application works with smartphones and tablets, and is accessible 24/7.
- Easy to install Relay telematics device.
- Integration with major ERPs makes it easy to connect routing, dispatching, and compliance to other internal systems.
- Intelligent reporting and business analytics tools.
- Displays the day's route path, including GPS pings received, in real time.
- View route timelines with configurable exceptions, such as missed delivery time windows.
- Route summary allows easy playback of the day's activities — locate a vehicle at a precise time, or even view previous days.
- Single mobile application for drivers to complete the day's work.



#### Routing + Dispatching + Compliance

Omnitracs' RDC platform is a single source of truth that allows you to manage your transportation needs for creating routes, monitoring them in real time, and managing compliance information and driver behavior. Create routes from orders, dispatch to mobile devices, and collect vehicle inspections and duty status — all from one mobile device and one backend solution. Drivers use a single device in the cab for both compliance and trip management functions, on an Android tablet or a smartphone.

#### More than traditional solutions

For more years than we can count, companies have had to rely upon different vendors, applications, devices, and data plans to manage the entire day — routing, dispatching, and compliance. Now, all of this is handled seamlessly in one solution set, while balancing costs and customer service without sacrificing safety.

It starts with building a solid route plan based upon business rules, customer preferences, and equipment and worker capacities — defining what overall work should be performed, how long it should take, and even the mileage and preferred directions to follow.

Routing is only a part of the total equation before vehicles can hit the roads. Before they go anywhere, they have to be certified as safe to drive. After routing, the plan is dispatched to the driver's mobile device where he or she can perform a vehicle inspection report, change duty status, and get on the road with a clear plan for the day.

Throughout the day, drivers receive guidance on where to go, when to arrive, and the prescribed workflow at customer stops to manage proof of delivery. No more moving between devices, no more duplicate data plans. Mobile dispatching makes drivers more efficient, giving them all the information they need.



## With Omnitracs RDC you'll be able to accomplish the following:

### Routing

- Quickly manage growing order volume into smart and efficient routes.
- Decrease routing time by spending less time making manual adjustments.
- Reduce transportation costs and mileage by creating daily route plans using powerful algorithms at street level in conjunction with business constraints to result in fewer miles driven and more stops per route.
- Increase resource utilization by making better use of existing resources and vehicle capacities by delivering more and driving less.
- Integrated, detailed, and consistently updated maps — view routes as they are being built and executed.

### Dispatching

- Manage by exception and react to changes as routes run in real-time.
- Dynamically insert stops in ways that are the least expensive in order to account for last minute orders and pick-ups.
- Compare actual vs. planned information, allowing you to provide superior and consistent customer service by monitoring service time, on-time arrivals, and meeting time windows.
- Better manage driver performance by being able to report on how the driver executed against the plan and understanding common driver challenges.

### Trip Management

- Removes the need for any guesswork by providing the daily route plan/stop list, as well as key information about stops, and real-time route updates and changes directly to the driver.
- Track customer interactions so employees have up-to-date customer information.
- Capture information out of the cab to ensure the delivery is perfect — and when it's not, capture what is wrong via picture notes; scanning; and over, short, and damaged details.
- Immediately record Proof of Delivery via signature capture.
- Allow direct messaging between drivers and dispatchers, eliminating the need to switch apps to send messages or make phone calls.

### Compliance + Safety

- Electronic pre- and post-route driver vehicle inspection reporting to ensure that vehicles are safe to drive every day.
- Automated tracking of driver duty status for hours of service reporting to keep your drivers in compliance every day and eliminate the need to carry paper with them.
- Electronic logs that are quickly available, so drivers never fear not having the right ones or enough days on hand.
- Simplify IFTA reporting and reduce audit risk with automatic state-by-state mileage and fuel purchase tracking.
- Track vehicle maintenance so that you're never surprised about what needs to be repaired immediately or what can wait until a preventive maintenance.
- Monitor vehicle fault codes to see which vehicles are in poor health and need attention.
- Find the risky drivers through monitoring driver behaviors such as speeding, idling, and harsh events.

| Product Offering and Related Features   | Routing | Routing + Dispatching | Routing + Dispatching + Compliance |
|---|---------|-----------------------|------------------------------------|
| <b>Routing</b>  |         |                       |                                    |
| <b>Route Editing:</b> Editing routes is made easy by quickly moving stops between routes using maps or list views   | ✓       | ✓                     | ✓                                  |
| <b>Route Scoreboard:</b> Don't make expensive manual moves – know exactly what the impact of each move is via the Route Scoreboard  | ✓       | ✓                     | ✓                                  |
| <b>Route Template:</b> Quickly create route templates to make daily routing fast and easy using visual tools  | ✓       | ✓                     | ✓                                  |
| <b>View &amp; Print:</b> Users can not only view, but print all windows including stop lists and routes   | ✓       | ✓                     | ✓                                  |
| <b>Multiple Routing Options:</b> Routing can be fully dynamic, static, or a combination of both to meet your business needs   | ✓       | ✓                     | ✓                                  |
| <b>Business Constraints:</b> Routing based upon preferred route times, equipment capacity, or number of stops while adhering to preferred service windows   | ✓       | ✓                     | ✓                                  |
| <b>Breaks Management:</b> Automatically adding pre- and post-trip time, breaks, waits, and layovers creates accurate route plans during the routing process, plus many more                                     | ✓       | ✓                     | ✓                                  |
| <b>Manage Pickups &amp; Deliveries:</b> Pickups can be fully integrated into routes making sure that your daily plan is accurate  | ✓       | ✓                     | ✓                                  |
| <b>Suggest Route:</b> Late or manual orders are no problem with the powerful Suggest Route algorithm which finds the best route   | ✓       | ✓                     | ✓                                  |
| <b>Multiple Map Views:</b> Being able to see what's going on just like you were there through multiple map views that include satellite, hybrid, and street views   | ✓       | ✓                     | ✓                                  |
| <b>Road Restrictions:</b> Route plans are only as accurate as the streets commercial vehicles can drive on – directions and plans are accurate when created because they adhere to commercial road restrictions | ✓       | ✓                     | ✓                                  |
| <b>Geocoding Locations:</b> Interactive Geocoder utilizing Google Maps® to ensure that your routes are accurate   | ✓       | ✓                     | ✓                                  |
| <b>Customer Segmentation:</b> Segment customers for better problem solving  | ✓       | ✓                     | ✓                                  |
| <b>Dispatching</b>  |         |                       |                                    |
| <b>Real-Time Location Info:</b> An answer to "Where's my Truck?" question in seconds with access to data in real time   |         | ✓                     | ✓                                  |
| <b>Driver Directions:</b> Go green and stop overloading drivers with paper: Mobile applications replace paper manifests and provide driving directions  |         | ✓                     | ✓                                  |
| <b>GPS Playback:</b> Coach drivers who run extra miles or make unplanned stops with real data   |         | ✓                     | ✓                                  |
| <b>Actual vs. Planned Reporting:</b> Identify trouble delivery spots and driver variances   |         | ✓                     | ✓                                  |
| <b>Driver Behavior:</b> Identify undesirable driver behavior – speeding, stopping too long, or being out of contact with the office   |         | ✓                     | ✓                                  |
| <b>Compliance</b>   |         |                       |                                    |
| <b>Electronic Hours of Service:</b> 395.15 Compliant Electronic Driver Logs that eliminate paper logs and prepare for the ELD mandate   |         |                       | ✓                                  |
| <b>Time Clock:</b> Time tracking for HOS and non-HOS drivers accurate time logs on the mobile device  |         |                       | ✓                                  |
| <b>Driver Vehicle Inspection Report (DVIR):</b> Automated, compliant vehicle inspections that eliminate paperwork and assist in task flow   |         |                       | ✓                                  |
| <b>International Fuel Tax Agreement (IFTA):</b> Automated fuel tax reporting makes IFTA as easy as "Print, Sign, Send"  |         |                       | ✓                                  |
| <b>Driver Scorecards:</b> Rank drivers on speed, MPG, idle and safety scores  |         |                       | ✓                                  |
| <b>Performance Reporting:</b> Capture and analyze vehicle and driver data   |         |                       | ✓                                  |

## Getting More from Your Technology Investment

The Omnitracs Alliance Program facilitates integration of Omnitracs solutions with other leading companies that provide complementary technologies and services. This program taps into the power of integration in order to best meet the needs of our shared customers.

We offer Omnitracs Professional Services to all sizes of fleets to help you utilize our applications and our partners' applications in the most efficient way. Our assessment, integration, custom development and programming, training, business intelligence, and predictive modeling services deliver practical solutions. This critical information increases your productivity and efficiency, so you can both grow and differentiate your business.

The Omnitracs Services Portal provides access to a suite of web-based fleet management applications, including satellite mapping. Data from the Services Portal can be integrated into your existing enterprise systems.

## About Omnitracs, LLC

Omnitracs, LLC is a global pioneer of trucking solutions for all business models. Omnitracs' more than 1,000 employees deliver software-as-a-service-based solutions to help more than 12,000 customers manage nearly 1,100,000 assets in more than 70 countries. The company pioneered the use of commercial vehicle telematics over 25 years ago and serves today as a powerhouse of innovative, intuitive technologies. Omnitracs transforms the transportation industry through technology and insight, featuring best-in-class solutions for compliance, safety and security, productivity, telematics and tracking, transportation management (TMS), planning and delivery, data and analytics, and professional services.

Learn how you can use our applications, platforms, and services to reduce costs, increase profitability, and stay competitive. Visit [www.omnitracs.com](http://www.omnitracs.com) and let us show you how you can save time and money.



omnitracs

717 N. Harwood Street  
Suite 1300  
Dallas, Texas 75201  
U.S.A.  
(800) 348-7227  
[www.omnitracs.com](http://www.omnitracs.com)