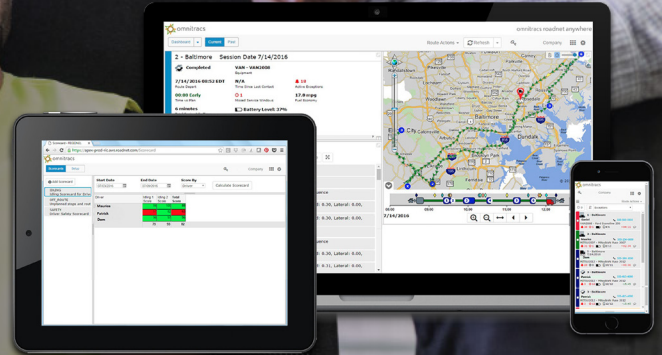


Omnitracs

Fleet telematics

Reduce costs, increase safety, and eliminate downtime by monitoring driving behavior and vehicle status, health, and location in real time.



Track the data that matters to your organization

Monitor a robust set of data-points from across your fleet with Fleet GPS Tracking – including:

- Maintenance
- Engine idling
- Speed levels
- Safety issue

Solution highlights



Small-form-factor in-cab hardware that's easy to install



Full integration with other Omnitracs solutions



Over 30 automated and configurable reports



Intuitive user interface



The extra mile

Get visibility into every route, stop, and event

The screenshot displays the Omnitrac software interface. On the left, a sidebar shows the truck's status as 'Traveling' and 'TRUCK1 - TRUCK1'. It lists the driver as 'Parker, Peter' and 'Barton, Clint'. A table of stops is shown with columns for 'Departure Time', 'Location Address', and 'Engine'. The stops are: 02:38 EST (no address), 03:41 EST (N FRONT ST YORK PA 17402), 04:41 EST (US 22 W / US 322 W / WILLIAM PENN HWY [BENVENUE RD] DUN...), 06:32 EST (139 EAST COLLEGE AVENUE 139 EAST COLLEGE AVE PLEASA...), 07:40 EST (1319 BENNER PIKE STATE COLLEGE PA 16801), 08:33 EST (2833 EAST COLLEGE AVE STATE COLLEGE PA 16801), and 10:04 EST (3102 EAGLE VALLEY ROAD MILL HALL PA 17751). Below the table, a 'Notifications' section shows two 'Harsh Cornering' events on 2/4/2015 at 11:14:31 EST, with G Force - Forward: 0.26, Lateral: N/A, and Vertical: N/A. On the right, a map shows the truck's route through Pennsylvania, with a yellow line indicating the path and a red pin marking a location. The map includes a 'Timeline' button at the bottom left.



See every route, stop, and event



Monitor critical events and react proactively



Identify trends that drive up costs across your fleet



Eliminate downtime and increase productivity

Find out more at omnitrac.com