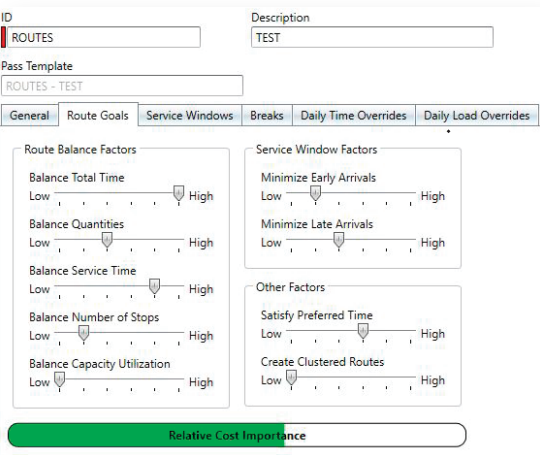


# Strategic planner

Model resource planning scenarios and route improvements while managing operations by leveraging advanced routing algorithms through first-of-its-kind technology.


## Re-routing analysis to manage strategically and boost productivity

Automatically analyze and optimize your distribution, service, and sales operations based on historical data to eliminate tedious manual re-routing and improve accuracy.



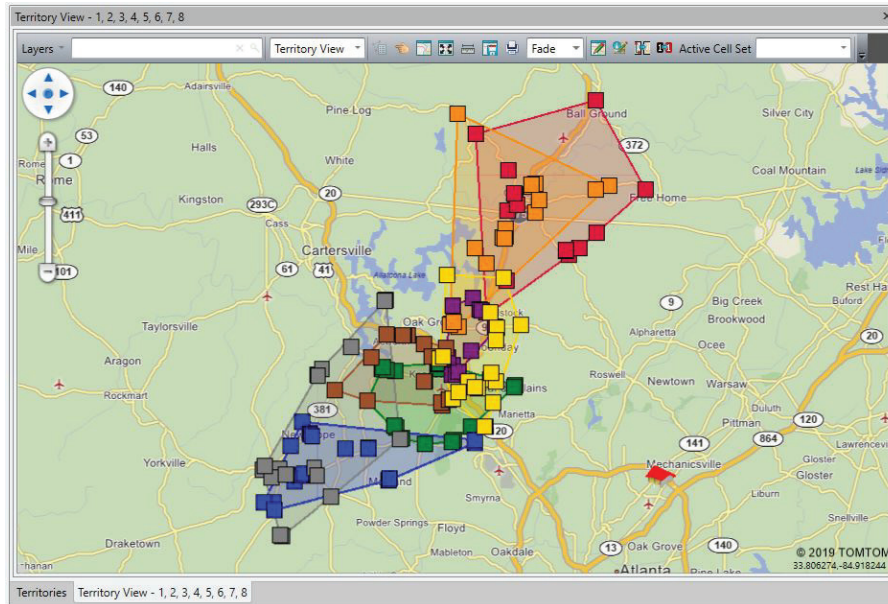
*Easily customize route preferences to fit your needs*

## Solution highlights

-  Fast, simple implementation
-  Digestible route statistics for quick comparison and selection
-  Configurable planning criteria
-  Seamless integration of territory and route exceptions
-  Configurable sales, service, and distribution reports

# The extra mile

View routes, stops, and assets at a glance



Reduce transportation costs by efficiently allocating resources



Better balance capacities and workloads



Automate your strategic re-routing process



Easily forecast the implications of route changes



Strategically meet the specific needs of each customer

Find out more at [omnitrac.com](https://www.omnitrac.com)